

## FEATURES

- > Sealed to IP67 and IEC529 providing reliable operation in any environment
- > Meets CE conformance standards - CE Approved
- > 500A continuous rating compliments even the largest of vehicle platforms
- > Overload ratings to 2500A for engine cranking at all temperatures
- > Low stable contact resistance means minimal voltage drop
- > Lock out - tag out feature for maintenance and vehicle storage

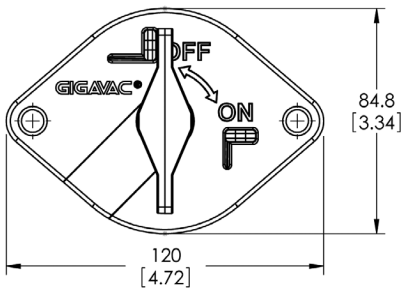
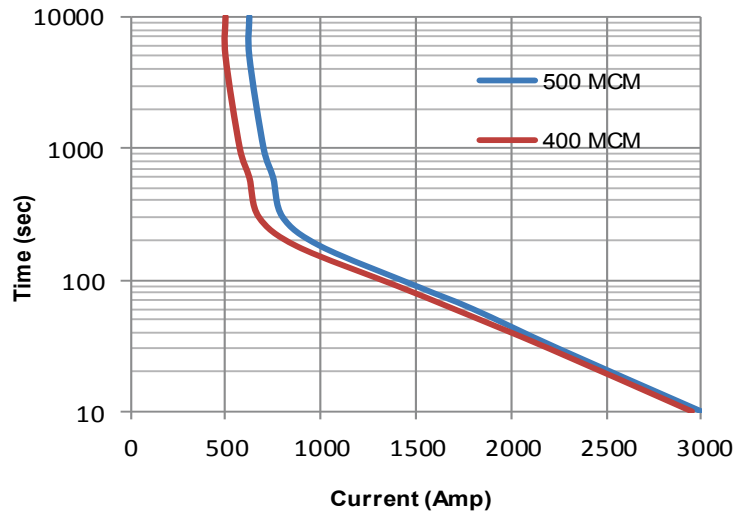
**ADVANCED SWITCHING SOLUTIONS**

### TECHNICAL DATA

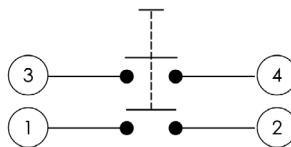
<b>Case/Cover Material</b>	Zytel
<b>Base Plate</b>	Zytel
<b>Switch Lever Material</b>	Zytel
<b>Min. Insulation Resistance</b>	100 MOhm
<b>Dielectric Withstanding Voltage</b>	1050V-1min
<b>Max. Contact Voltage Drop</b>	150mv
<b>Voltage</b>	up to 32VDC
<b>Continuous Rating</b>	2x500A
<b>Overload</b>	2x2000A-1.5 min 2x2500A-10 sec
<b>Sealing</b>	IP67/IEC 529
<b>Vibration</b>	10G 18-500Hz
<b>Weight</b>	700g/1.55lb
<b>Temperature Range</b>	-40C to +85C
<b>Wire Section (at nominal load)</b>	min. 250mm <sup>2</sup>
<b>Lever</b>	non-removeable
<b>Max. Torque (Main Contacts)</b>	15-20Nm



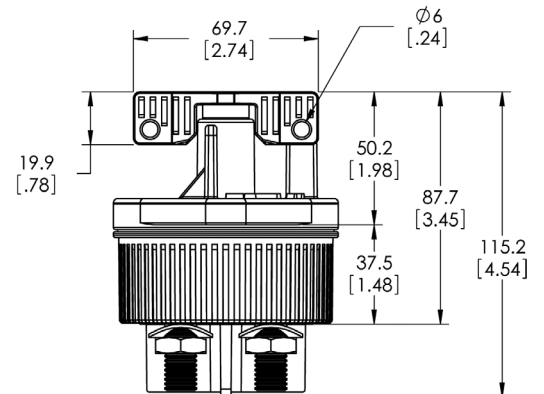
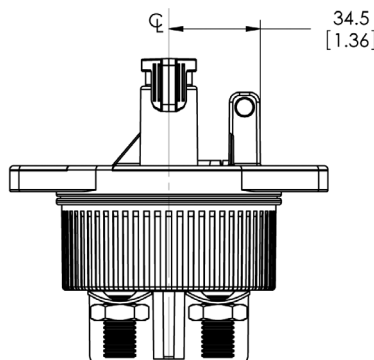
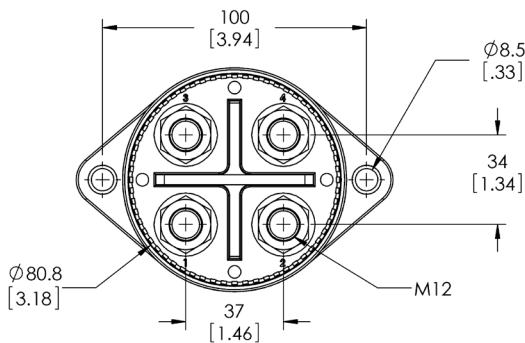
**Current Carry vs Time**  
with 85°C terminal temperature rise



#### CIRCUIT



#### BD9521 SHOWN





### PART NUMBER SYSTEM

BD	9	5	2	1
<b>Mount</b>	9 = Flange Mount, 120mm wide			
<b>Current Rating</b>		5 = 500A		
<b>Power Terminals</b>			1 = M10 terminals 2 = M12 terminals	
<b>Locking Hasps and Lever</b>				1 = ON and OFF, Black lever, 6mm holes 2 = OFF only, Black lever, 8mm holes 3 = ON and OFF, Red lever, 8mm holes 4 = OFF only, Red lever, 8mm holes 5 = ON and OFF, Yellow lever, 8mm holes 6 = OFF only, Yellow lever, 8mm holes